

SCHAEFER

770

[www.SchaeferYachts.ca](http://www.SchaeferYachts.ca)



***YACHT***  
SOLUTIONS

416.907.9046

[www.YachtSolutions.ca](http://www.YachtSolutions.ca)  
[info@theyachtsolution.com](mailto:info@theyachtsolution.com)



@yacht\_solutions



YACHT Solutions



@theyachtsolution



YACHT Solutions





## KEY FEATURES

- Two new massive 17' fold-out balconies open to form a vast entertainment area
- Advanced helm station with Volvo Penta All-In-One Glass Cockpit System – Links effortlessly with your smartphone or tablet via Built-In WiFi
- Customizable cabin and deck layouts make this yacht easy to personalize for your lifestyle or business needs.
- The expansive main deck, flybridge and countless other novelties make the new Schaefer 770 a must-own to even the most savvy boaters.
- Premium Fusion® audio system with Bluetooth®, Wi-Fi audio streaming with Apple AirPlay® 2 & Digital Signal Processing (DSP).



### STANDARD PROPULSION

Triple Volvo Penta® IPS 950 D11



### FUEL CAPACITY

4,450 L (1,175 gal)



### LENGTH OVERALL

77' 4" / 23.56 m  
with integral swim platform



### BEAM

19' 2" / 5.86 m



### DRAFT

5' 3" / 1.59 m



### DRY WEIGHT

97,000 lbs / 51,200 kg



### DEADRISE

14°



### WATER CAPACITY

1,600 L / 422 gal



### HOLDING TANK

100 L / 26.4 gal



### PASSENGER CAPACITY (DAY)

25



### PASSENGER CAPACITY (NIGHT)

8 + 3

*Specifications are approximations and subject to variance.*

## STANDARD EQUIPMENT

### COCKPIT

- 2 x 17' long hydraulic balconies
- Sofa upholstered in nautical courvin
- Silestone table with coasters
- Speakers and wired remote control
- Teak floor
- Side glass doors for salon and bar
- LED courtesy lights
- Recessed LED ceiling lights

### HELM STATION

- Stainless steel and leather marine steering wheel
- Dashboard in leather
- Captain's seat in leather with electric adjustment
- Engine control display
- Bilge pump, exhaust controls switches
- Control of winch and wipers
- USB Outlets
- Horn and Compass

### SALON

- 40" LED Smart TV
- Soundbar
- Table
- Sofa
- Wood floor or luxury vinyl flooring
- Electric windows

### GALLEY

- Countertop in Silestone® with sink and faucet
- Oven with Microwave
- Full size fridge, and full size freezer
- 4 Burner electric cooktop
- Range hood
- Furniture with drawers and holder for cups and plates
- 110V outlets

### MOORING

- 8 x Stainless steel cleats
- 2300W windlass with local and remote control
- 2 x electric winches for stern mooring
- 72lbs SS-Anchor and swivel and 196' galvanized chain

### LIGHTING

- 24V LED Lights

### STERN

- Garage for RIB and jet ski (alternate options available)
- Stainless steel swim ladder with hand grip
- Aft shower with hot and cold water
- Platform in teak
- Battery charger + cable + shorepower inlet

### BOW

- Sun pad cushion with flip-up lounge seating
- Sofa
- High-low table
- Ice box
- Sink and faucet
- 2 x pop-up courtesy lighting
- Stainless Steel Rail
- Bow shade with 4 poles
- Anchor locker, ropes and fender storage
- Winch control

### FLYBRIDGE

- Hard top
- Second helm station
- Gourmet station with sink and faucet
- Electric grill
- Sofa upholstered in nautical courvin
- Stainless steel stairs with steps in teak
- Wood/Silestone table
- Lounge Seating
- Aft shade with poles
- Loudspeakers

### MASTER CABIN

- 40" LED Smart TV
- Lacquered furniture with shelves and drawers
- Sofa
- Double Bed
- 2 x Bedside tables with reading lights
- Air conditioning
- Carpet
- Walk-in closet
- 110V Outlets
- 12V Courtesy lights

### VIP CABIN

- Double Bed
- Lacquered furniture with shelves and drawers
- Air conditioning
- Carpet
- 110V Outlets
- 12V Courtesy lights

### STARBOARD/PORT CABIN

- Twin bed with filler cushion for double bed
- Lacquered furniture with shelves and drawers
- Air conditioning
- Carpet
- 110V Outlets
- 12V Courtesy lights

### CREW CABIN

- 2 x Single beds
- Electric toilet
- Air conditioning
- 110 V Outlets

### COMFORT

- 3 x Electric Toilet
- 2 x Separate shower with glass enclosure
- 3 x Vessel sink and faucet
- 3 x Mirror with storage

## ENGINE ROOM

### BILGE PUMPS

- 1 x 3700GPH 24V bilge pumps with auto and manual switch
- 2 x 2000GPH 24V bilge pumps with auto and manual switch
- 1 x 500GPH 24V electric bilge pump with auto and manual
- Flood alarm system

### AIR CONDITIONING SYSTEM

- Chiller System with 2 compressors
- Air conditioning controls in salon, suites and crew cabin
- Salon with 36,000 BTU
- Master cabin with 12,000 BTU
- VIP cabin with 10,000 BTU
- Starboard cabin with 6,000 BTU
- Port cabin with 6,000 BTU
- Crew cabin with 5,000 BTU

### FRESH WATER SYSTEM

- Fresh water tank with 1,600 L (422 Gal) capacity

### OTHER EQUIPMENT

- 50 / 60A Galvanic Isolator
- Soundproofing
- Exhaust fans
- Electric trim tabs
- Hot water system
- Full canvas enclosure (cockpit and flybridge)
- Window covers (snap in)
- FIREBOY Automatic fire suppression system

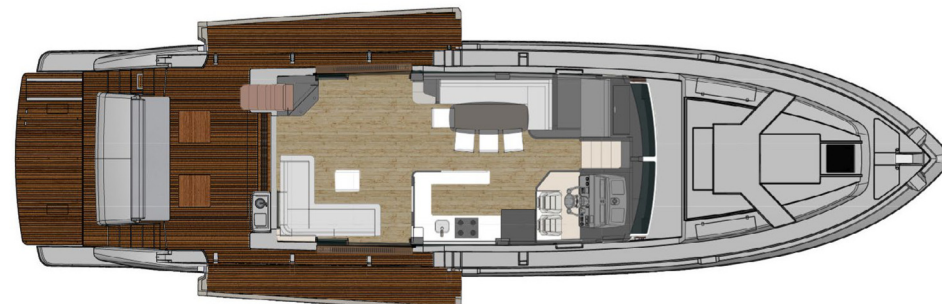


## LAYOUT

**MAIN DECK - OPTION 1**



**MAIN DECK - OPTION 2**



**CABINS - OPTION 1**



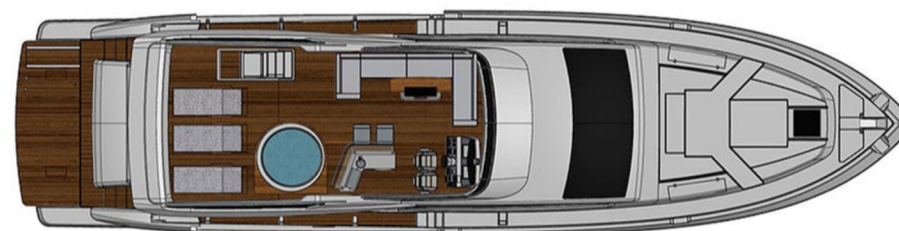
**CABINS - OPTION 2**



## CONSTRUCTION

- Vacuum infused hull
- GRP with PVC foam coated hull, deck and superstructure
- Structural chassi with girder and floor plate
- Isophtalic gelcoat
- Estervynil resin skin coat
- All deck hardware produced in 316L stainless steel
- Certified tinned wires

## FLYBRIDGE





With the all-new Schaefer 770, another milestone for the shipyard and the nautical market has been set. A bold, modern and sophisticated design resulting in a stunning yacht. Two 17' long side-doors open to form a vast entertainment area while well designed lines convey a modern look. Meet the all-new Schaefer 770 and discover an unparalleled yacht - more spacious and more advanced than any other before.



YACHT Solutions | 416.907.9046 | [yachtsolutions.ca](http://yachtsolutions.ca)

**Note:** Not all accessories shown in pictures or described herein are standard equipment or even available as options. Some features and options may not be available when a boat is built. Options and features are subject to change without notice. Not all model year boats may contain all the features or meet the specifications described herein. Confirm availability of all accessories and equipment prior to purchase.





YACHT Solutions | 416.907.9046 | [yachtsolutions.ca](http://yachtsolutions.ca)

**Note:** Not all accessories shown in pictures or described herein are standard equipment or even available as options. Some features and options may not be available when a boat is built. Options and features are subject to change without notice. Not all model year boats may contain all the features or meet the specifications described herein. Confirm availability of all accessories and equipment prior to purchase.





YACHT Solutions | 416.907.9046 | [yachtsolutions.ca](http://yachtsolutions.ca)

**Note:** Not all accessories shown in pictures or described herein are standard equipment or even available as options. Some features and options may not be available when a boat is built. Options and features are subject to change without notice. Not all model year boats may contain all the features or meet the specifications described herein. Confirm availability of all accessories and equipment prior to purchase.





YACHT Solutions | 416.907.9046 | [yachtsolutions.ca](http://yachtsolutions.ca)

**Note:** Not all accessories shown in pictures or described herein are standard equipment or even available as options. Some features and options may not be available when a boat is built. Options and features are subject to change without notice. Not all model year boats may contain all the features or meet the specifications described herein. Confirm availability of all accessories and equipment prior to purchase.





YACHT Solutions | 416.907.9046 | [yachtsolutions.ca](http://yachtsolutions.ca)

**Note:** Not all accessories shown in pictures or described herein are standard equipment or even available as options. Some features and options may not be available when a boat is built. Options and features are subject to change without notice. Not all model year boats may contain all the features or meet the specifications described herein. Confirm availability of all accessories and equipment prior to purchase.





YACHT Solutions | 416.907.9046 | [yachtsolutions.ca](http://yachtsolutions.ca)

**Note:** Not all accessories shown in pictures or described herein are standard equipment or even available as options. Some features and options may not be available when a boat is built. Options and features are subject to change without notice. Not all model year boats may contain all the features or meet the specifications described herein. Confirm availability of all accessories and equipment prior to purchase.





YACHT Solutions | 416.907.9046 | yachtsolutions.ca

**Note:** Not all accessories shown in pictures or described herein are standard equipment or even available as options. Some features and options may not be available when a boat is built. Options and features are subject to change without notice. Not all model year boats may contain all the features or meet the specifications described herein. Confirm availability of all accessories and equipment prior to purchase.





YACHT Solutions | 416.907.9046 | [yachtsolutions.ca](http://yachtsolutions.ca)

**Note:** Not all accessories shown in pictures or described herein are standard equipment or even available as options. Some features and options may not be available when a boat is built. Options and features are subject to change without notice. Not all model year boats may contain all the features or meet the specifications described herein. Confirm availability of all accessories and equipment prior to purchase.





YACHT Solutions | 416.907.9046 | [yachtsolutions.ca](http://yachtsolutions.ca)

**Note:** Not all accessories shown in pictures or described herein are standard equipment or even available as options. Some features and options may not be available when a boat is built. Options and features are subject to change without notice. Not all model year boats may contain all the features or meet the specifications described herein. Confirm availability of all accessories and equipment prior to purchase.



Creating more than 600 direct jobs in Brazil with a vertically integrated production process, Schaefer Yachts guarantees a timely delivery of your boat while attaining the highest quality standards.

With one of the biggest machining equipment of the Americas, Schaefer Yachts CNC guarantees the accuracy in the production of all parts involved in the project.

All parts are produced by a vacuum infusion process resulting in lightweight and sturdy vessels that provide a more comfortable, safe and economical journey.

With its own in-house woodwork, Schaefer Yachts found the solution to bring the finish and refinement desired in our boats.



**YACHT Solutions** | 416.907.9046 | [yachtsolutions.ca](http://yachtsolutions.ca)

**Note:** Not all accessories shown in pictures or described herein are standard equipment or even available as options. Some features and options may not be available when a boat is built. Options and features are subject to change without notice. Not all model year boats may contain all the features or meet the specifications described herein. Confirm availability of all accessories and equipment prior to purchase.



## 5-AXIS CNC MACHINE

The new product development center is equipped with a 5-axis CNC, the only one in the Brazilian nautical market, it is able to machine molds up to 75 feet from a single block with the highest standards of quality, accuracy, and finish. A unique construction process, one of the most modern in the world, places Schaefer Yachts in the lead of the production of recreational boats in South America.

## VACUUM INFUSION PROCESS

All parts of each vessel from 36 to 83 feet are produced by vacuum infusion system, resulting in lighter more economical and robust vessels, providing more comfort and safety for its navigation.



YACHT Solutions | 416.907.9046 | [yachtsolutions.ca](http://yachtsolutions.ca)

**Note:** Not all accessories shown in pictures or described herein are standard equipment or even available as options. Some features and options may not be available when a boat is built. Options and features are subject to change without notice. Not all model year boats may contain all the features or meet the specifications described herein. Confirm availability of all accessories and equipment prior to purchase.